

PRO LINE FUSION® INTEGRATED AVIONICS SYSTEM

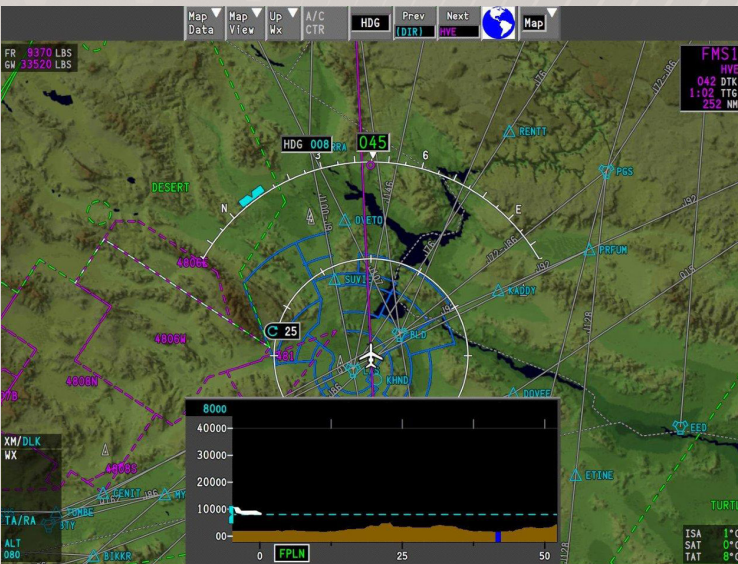
Pro Line Fusion® on Gulfstream® G280: Your direct path to see and access more.



Starting with its baseline features, the Pro Line Fusion avionics in your Gulfstream PlaneView280™ flight deck offer capabilities that will enhance your flying experience. Enjoy an expansive, three-display configuration with a simplified graphical interface. Save time with efficient database loading. Pro Line Fusion increases situational awareness while reducing pilot workload.

POWERFUL BASELINE FEATURES

- › Three 15.1-inch high-resolution displays – largest in the industry
- › Vertical Situation Display
- › Electronic checklist
- › On-board maintenance
- › Graphical synoptics
- › Electronic charts, enhanced map overlays
- › MultiScan™ weather radar
- › Full-flight regime autothrottle
- › Dual flight management system
 - LPV and RNP capabilities
- › TCAS II
- › Data-link graphical weather
- › Terrain Awareness Warning System

Pro Line Fusion *(baseline)*

One complete view

Quickly modify or create a flight plan directly on the moving map using point-and-click functionality. Easily add map symbols, overlays, weather or terrain for a complete flight plan view. Reduce the risk of controlled flight into terrain with separate top-down and side profile views.

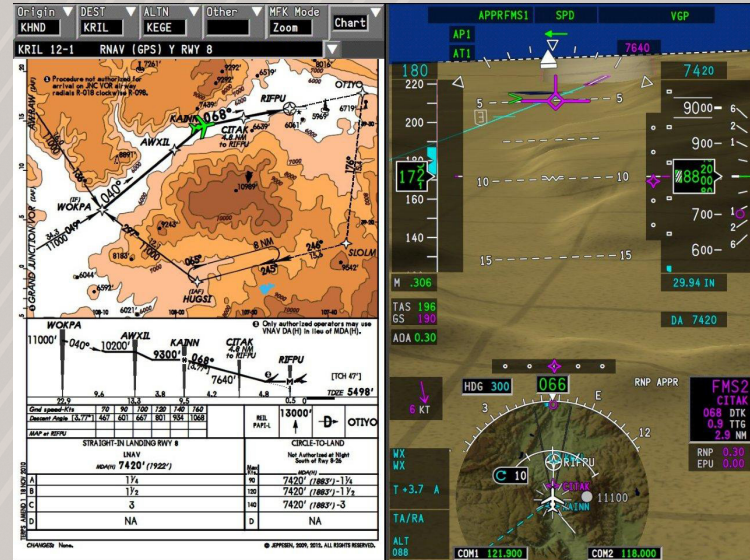


Electronic checklists/synoptics

Monitor aircraft systems easily with centrally located data. Electronic checklists and advanced synoptics simplify procedural steps – whether for normal, abnormal or emergency situations.

[illegible]

Automatically scans the skies up to 320 nautical miles ahead of the aircraft, detecting and assessing weather threats. Clutter-free cell storm tracking depicts weather conditions with four-color clarity. OverFlight protection mitigates the risk of inadvertently penetrating thunderstorm tops.



Enhance operational efficiency by accessing charts through the aircraft's multifunction displays. Know where you are on the ground or in the air with accurate aircraft positioning displayed on both approach procedures and airport diagrams. Charts are always available – no need to manage a separate device, batteries, power or inconsistent display data.

Pro Line Fusion avionics options for Gulfstream G280



Advance your G280's performance while positioning it for NextGen®

Your powerful, flexible and efficient Pro Line Fusion flight deck brings the high performance you expect in a Gulfstream aircraft. Now you can take that performance to an even higher level, with options that can further streamline flight operations and equip your G280 for NextGen airspace.

KEY OPTIONS

- › Head-up Guidance System with Enhanced Vision System
- › Future Air Navigation System (FANS-1/A) capability
- › Link 2000+
- › Synthetic Vision System on primary flight display
- › Automatic Dependent Surveillance-Broadcast (ADS-B) Out
- › Dual electronic charts
- › XM WX Satellite Weather®
- › Intercontinental package

Additional options available



Pro Line Fusion® Options





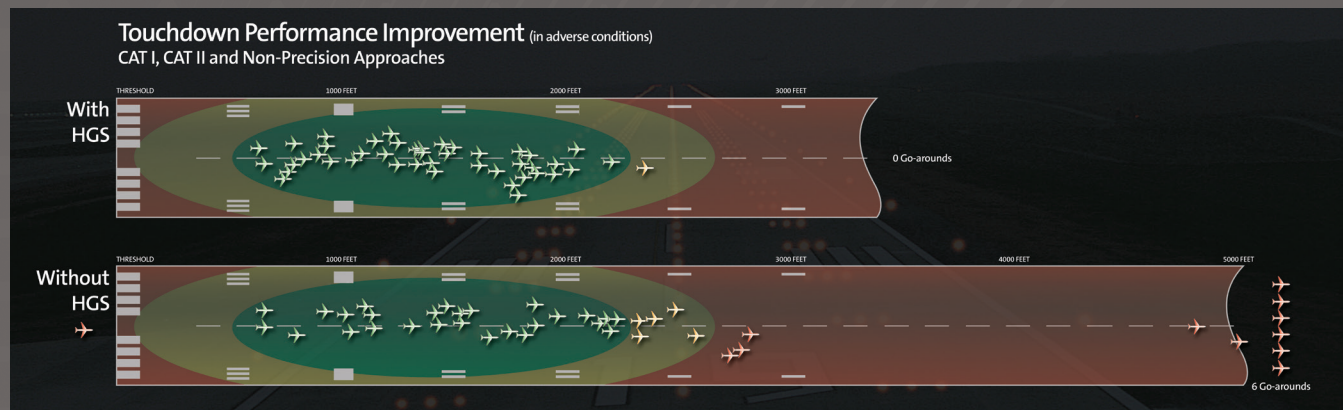
- Enables use of SA CAT I approval and EVS CAT I lower landing minima
- Overlays aircraft flight path and attitude symbols with the real world
- Assists in maintaining stabilized approaches

Head-up Guidance System (HGS™) with Enhanced Vision System (EVS)

HGS delivers critical flight information and guidance cues that inform and assist pilots in every phase of flight. Improves situational awareness and energy management while increasing touchdown precision.

The Gulfstream EVS II™ provides live, infrared imagery of the approach and landing environment to the HGS. See wildlife, vehicles and other obstacles. Together, HGS and EVS can help reduce airport diversions in low-visibility conditions.

The first study looked at landings with and without HGS assistance.



The second study, conducted between 1995 and 2007, concluded that HGS technology could have prevented or positively influenced

69%

of all takeoff and
landing accidents

57%

of all loss-of-control
accidents

38%

of total commercial
aircraft accidents

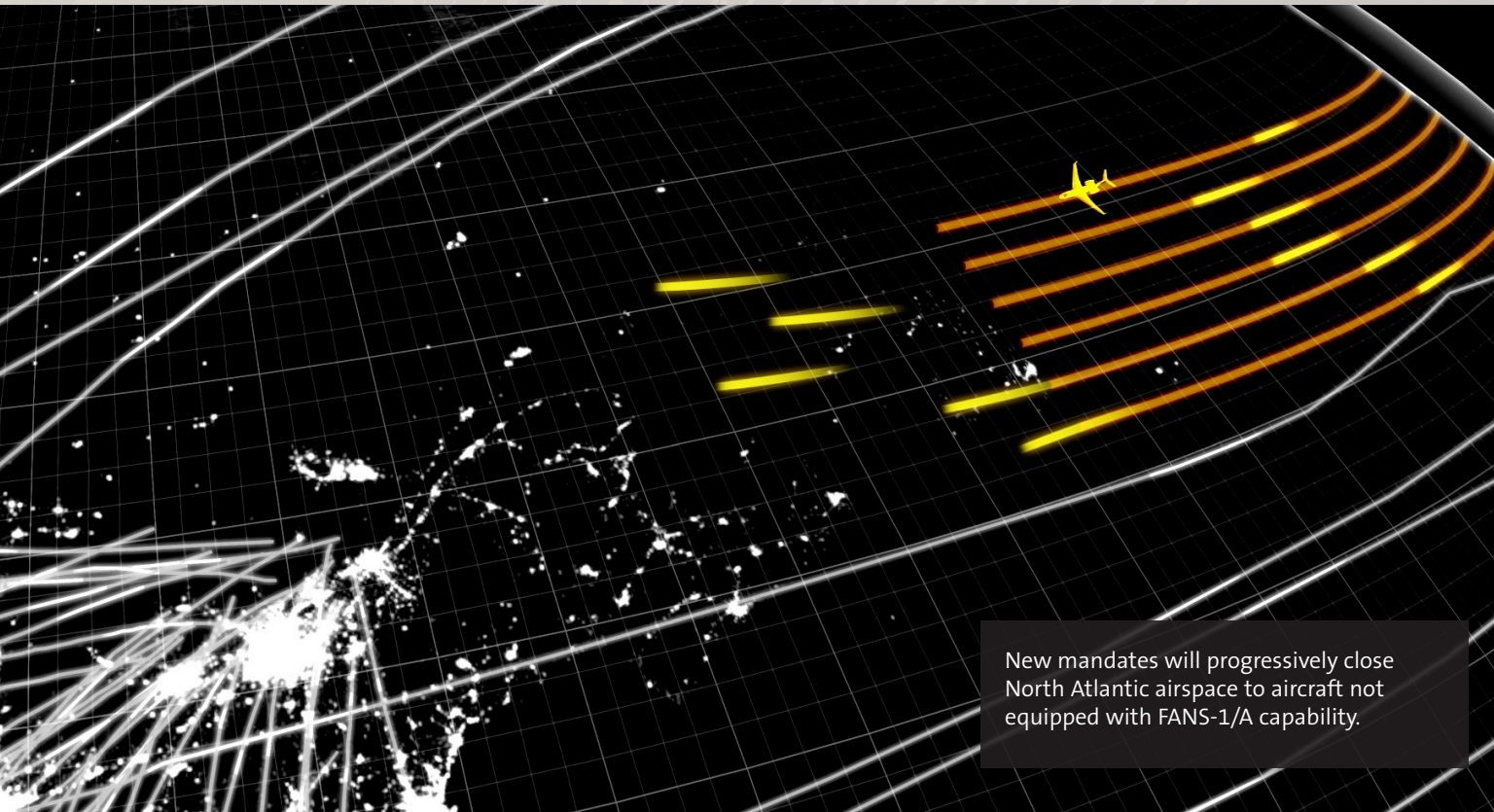
Safer flights with HGS

The independent Flight Safety Foundation conducted two studies on how HGS affects aircraft safety.
Conclusion: Head-up guidance systems offer dramatic performance improvements and safety advantages.



HGS™ Flight

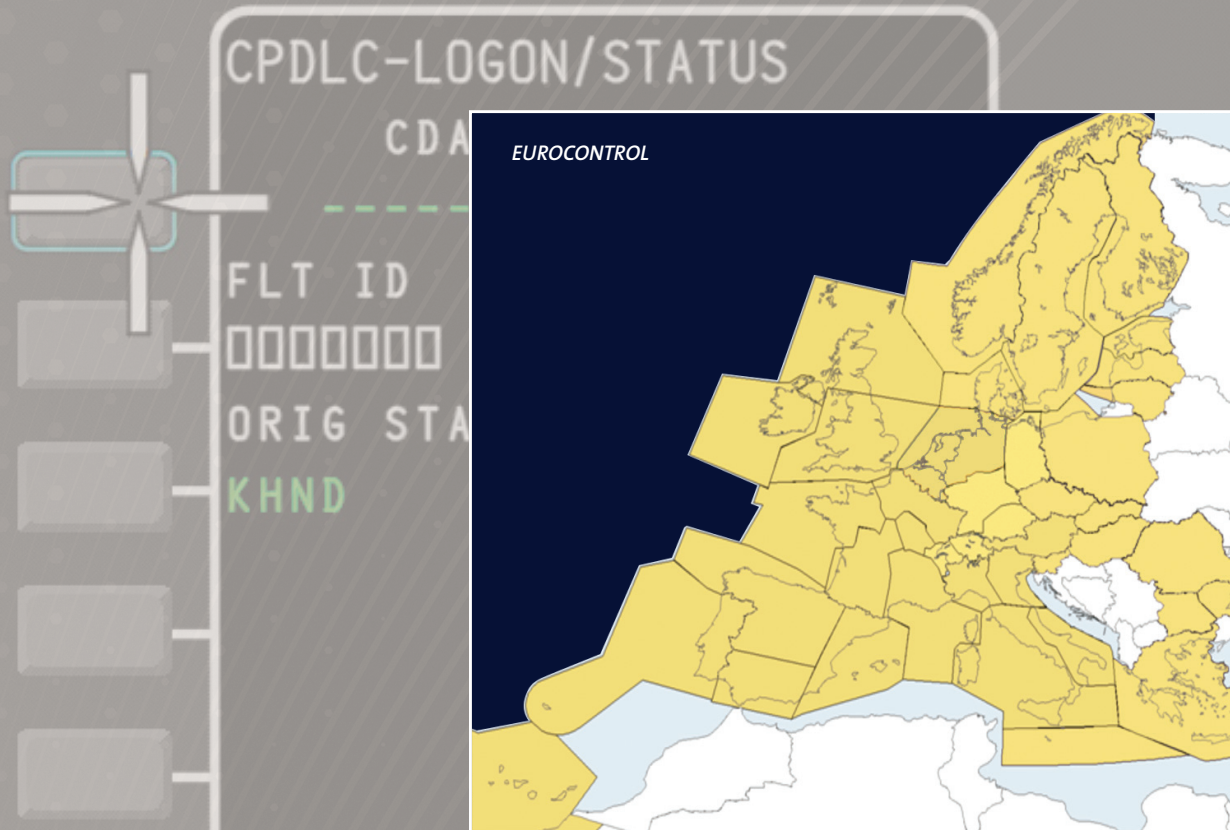




New mandates will progressively close North Atlantic airspace to aircraft not equipped with FANS-1/A capability.

FANS-1/A capability

Equips your G280 to meet mandates for access to the preferred North Atlantic Tracks across the Atlantic Ocean. These faster, more efficient routes reduce flight time, aircraft operating/maintenance costs and fuel burn.

**Link 2000+**

This direct data-link channel enables reliable communication between pilots and air traffic controllers. Link 2000+ is recommended for flights within EUROCONTROL jurisdiction.



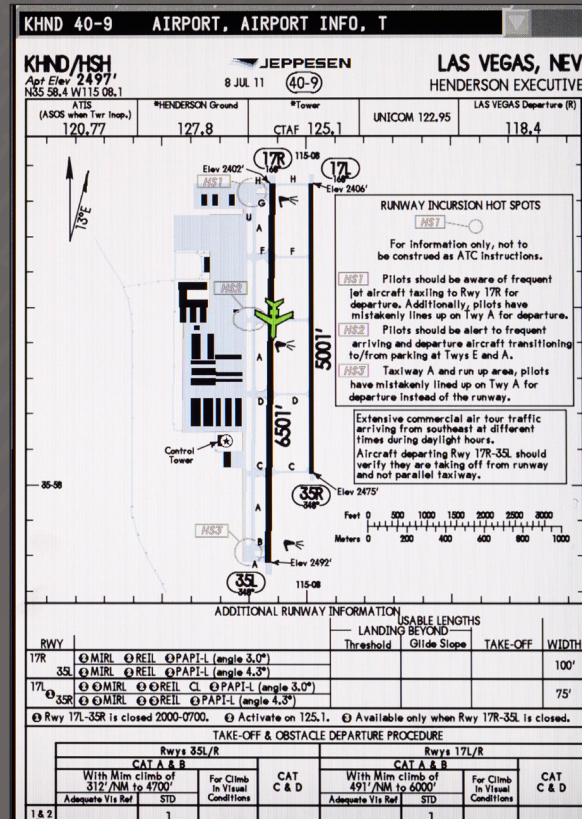
Synthetic Vision System (SVS) on primary flight display

No matter the weather conditions, SVS improves situational awareness and safety when flying a terrain-challenged approach or a night approach into an unfamiliar airport. Integration of multiple databases with real-time flight data produces a clearer view of the flight surroundings environment for terrain and obstacle avoidance.

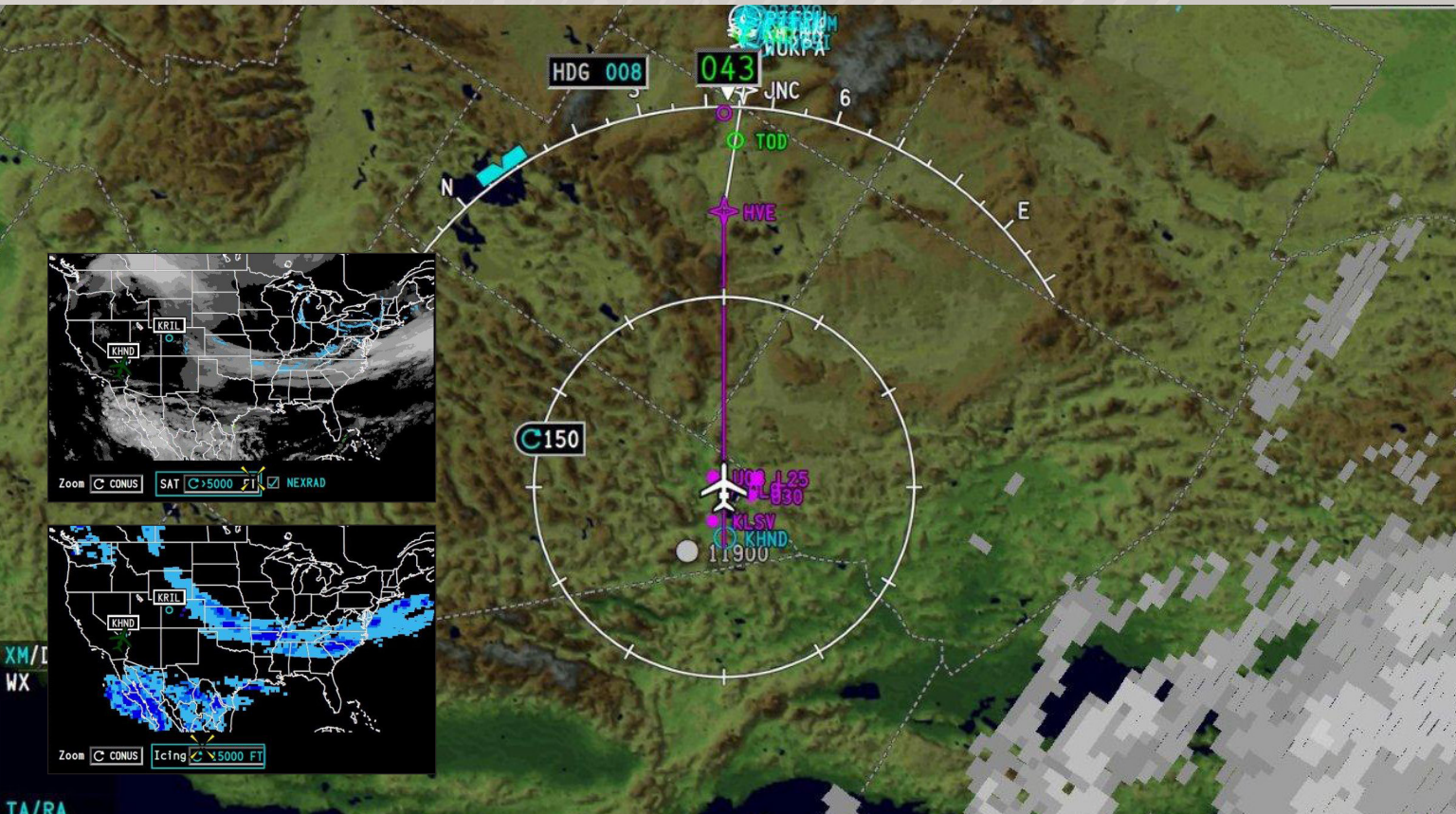


Automatic Dependent Surveillance-Broadcast (ADS-B) Out

Comply with upcoming ADS-B Out mandates while maintaining your aircraft's value. This option delivers real-time traffic and aeronautical information to your flight deck. Note: Image includes ADS-B In concepts.



Lighten the load by transitioning to a paperless or reduced-paper cockpit. Dual charts deliver one consistent look and feel. Fully integrated, reliable charts curtail the need to manage and carry on a separate device.



XM WX Satellite Weather

When you fly in the continental United States, you can rely on XM's high-resolution, strategic data for real-time awareness of changing weather conditions. For flights worldwide, data-link graphical weather provides accurate views of weather conditions in your flight path. Both weather-tracking capabilities overlay data on the navigational map for ease of pilot decision making.



Intercontinental package

For flights from North America to Europe, dispatch with the backup equipment you need to experience uninterrupted communications between your G280 and air traffic control. The package includes second altimeter, HF radio and data link, and third flight management system and navigation computer. Each component also available individually.

Building trust every day.

Rockwell Collins delivers smart communication and aviation electronic solutions to customers worldwide. Backed by a global network of service and support, we stand committed to putting technology and practical innovation to work for you whenever and wherever you need us. In this way, working together, we build trust. Every day.

For more information, contact:

Rockwell Collins
400 Collins Road NE
Cedar Rapids, Iowa 52498
+1.319.295.4085
email: csmarketing@rockwellcollins.com
www.rockwellcollins.com