

AN/ARC-210 Talon™ Programmable Digital Communication System



RT-8200 — various configurations provide optimum multimode communications.

The Talon RT-8200 series radio combines outstanding performance with exceptional capability and flexibility in a small package. The Talon radio integrates state-of-the-art digital technology with software reprogrammability to create a multiband/multimode capability. The system provides voice and data communications that provide increased interoperability, flexibility and combat effectiveness.

By offering a fully digital architecture, the Talon radio can be easily reprogrammed with different waveforms and operating modes through the use of the latest digital signal processors. The Talon RT-8200 radio is designed to easily accommodate a full range of communications waveforms and ancillary equipment to meet specific customer requirements. It provides multimode voice and data communications in normal, secure and/or jam-resistant modes over the VHF/UHF range (30 MHz - 400 MHz).

MODES OF OPERATION

- › Normal single channel (30 MHz - 400 MHz)
- › Tactical VHF (30 MHz - 88 MHz)
- › Air traffic control (108 MHz - 136 MHz)
 - 25 kHz channel spacing
 - 8.33 kHz European channel spacing (ED-23B compatible)
- › Land mobile (136 MHz - 156 MHz)
- › Maritime (156 MHz - 174 MHz)
- › Military UHF (225 MHz - 400 MHz)

**Rockwell
Collins**

Building trust every day

FEATURES

- 250 normal preset channels
- 250 ECCM preset channels
- Channel scan (4 preset channels)
- Two guard receiver frequencies: 121.5 MHz and 243 MHz
- Software reprogrammable
- Embedded FM Immunity filter
- Upgrade available for manpack interoperability, including
 - Quicklook 1A* ECCM waveform
 - Citadel®* encryption
 - Rockwell Collins Embedded “Encryption A”
- Compatible with a variety of ancillary equipment
 - Remote control units
 - High power amplifiers
 - Data loaders
 - Mounts
 - Tunable filters/antennas

OUTPUT POWER

- NLT 15 watts/NMT 23 watts FM
- NLT 10 watts/NMT 15 watts AM (carrier power)
- Half-power and programmable turn down discretetes
- Programmable power turn-down tables

INTERFACES

- RF ports
 - Single port (Tx/Rx)
 - ADF/dedicated Rx port
- Discrete I/O for flexible control/status
- Control bus for tunable antennas/filters
- External time standard input (GPS time)
- ICS (intercommunications system)
 - Programmable audio levels
- MIL-STD-1553B control interface
- RS-485 control interface (for remote control units)
- DS-101 single point fill interface
 - ECCM parameters
 - RT presets
- MIL-STD-1553B single point fill interface
 - ECCM parameters
 - RT presets
- RS-232 fill interface
 - ECCM parameters
 - RT presets
- DS-102 fill interface
 - HQ/SATURN WOD/MWOD
- RS-232 data port

ECCM MODES OF OPERATION

- Have Quick I/II
- SINCGARS (V)
- SATURN
- TALON™ (country unique)

SPECIFICATIONS SUBJECT TO CHANGE WITHOUT NOTICE

SPECIFICATIONS

Power	+28 V dc 154 watts TX 34 watts RCV
Weight	12.2 lbs
Width	5.0 in
Height	5.6 in
Length	9.8 in
Test specifications	MIL-STD-461E MIL-STD-810E

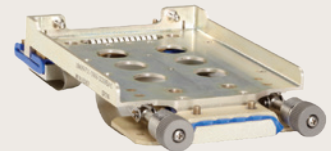
ANCILLARY EQUIPMENT



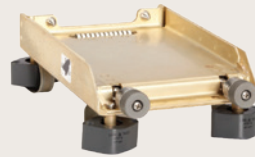
DL-8171 Data Loader



RCU-815X Remote Control Unit



MT-6567 Low Profile Mount



MT-4935 Isolated Mount



994M-4 Mount

Building trust every day.

Rockwell Collins delivers smart communication and aviation electronic solutions to customers worldwide. Backed by a global network of service and support, we stand committed to putting technology and practical innovation to work for you whenever and wherever you need us. In this way, working together, we build trust. Every day.

For more information, contact:

Rockwell Collins
400 Collins Road NE
Cedar Rapids, Iowa 52498
+1.800.321.2223
+1.319.295.5100
fax: +1.319.378.1172
email: learnmore@rockwellcollins.com
www.rockwellcollins.com

**Rockwell
Collins**

Building trust every day

*Allows interoperability with other radio systems using a compatible Citadel Cryptographic Encryption Citadel is a registered trademark of Harris Corporation.