

# COLLINS TORSIONAL MECHANICAL FILTER

## 7- POLE DESIGN

ELECTRICAL	0°C TO +60°C	
	VALUE	TOLERANCE
<b>CENTER FREQUENCY</b>	455.00 kHz	± 0.09 kHz
<b>BANDWIDTHS</b> F3H - F3L F60H - F60L	0.300 kHz 1.000 kHz	± 0.06 kHz max.
<b>PASSBAND RIPPLE</b>	3.0 dB	max.
<b>INSERTION LOSS</b>	10.0 dB	max.
<b>STOPBAND</b> 355 kHz to F60L F60H to 555 kHz	60 dB 60 dB	min. min.

NOTE: The maximum signal input voltage is 1.0 volt RMS.

ROCKWELL COLLINS  
FILTER PRODUCTS  
14101 MYFORD ROAD, TUSTIN, CA 92780

**526-8733-010**

Engineer: D. P. Havens

Filter Type: SYM

Rev. Ltr. B

Approved: L. G. Cornett

FSCM No.: 2X491

Date: 5-27-98

**ENVIRONMENTAL REQUIREMENTS:**

OPERATING TEMPERATURE RANGE: 0°C to +60°C

NON-OPERATING TEMPERATURE RANGE: -30°C to +85°C

VIBRATION: MIL-STD-202, Method 201, 10 G's, 10 Hz to 55 Hz

SHOCK: MIL-STD-202, Method 213B, 50 G's, 11 ms, half-sine

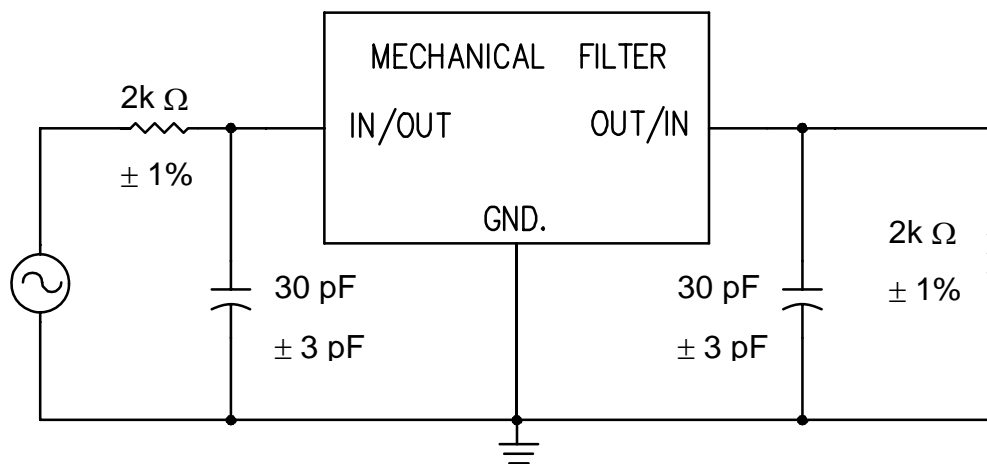
**MECHANICAL REQUIREMENTS:**

CONSTRUCTION: Sealed, Non-Hermetic

CASE STYLE: PS

MARKING: Rockwell Collins Part Number  
Date Code

**TEST CIRCUIT:**



NOTE: 30 pF Includes any board stray capacitance.